

Be Part of the Solution

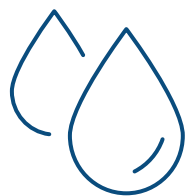


Calling all farmers within the Cedar Creek watershed – you can help.



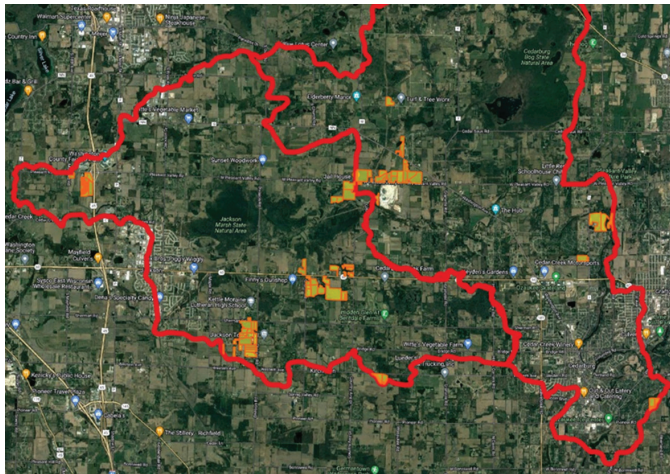
Runoff from farm fields and other wet weather discharges to the creek have a negative impact on water quality. Any efforts you can make to reduce runoff will provide benefits. Every little bit makes a difference. Would you like to learn more?

Cedarburg is supporting efforts to reduce phosphorus runoff to the creek from farm fields by providing incentives to farmers to install new practices. Practices such as cover crop, no till, and other conservation practices focus on improving soil health and keeping topsoil where you need it most. It has been proven time and time again, healthy soils directly improve water quality. Cedarburg is required by the Wisconsin Department of Natural Resources to reduce phosphorus discharges to the creek from its wastewater treatment plant called the Water Recovery Center (WRC). Cedarburg has elected to work with the farming community to reduce runoff in place of costly upgrades to the WRC. Incentives provided from Cedarburg encourage farmers to keep fields covered with crop residue or green cover for as much of the growing season as possible.



It has been proven time and time again, **healthy soils** directly **improve water quality**.





Target Area for Incentive Program

How does the incentive program work?

Cedarburg will pay farmers for year around coverage of farm fields with either living plant cover (green cover) or crop residual from no till farming as follows:

- Green or living plant cover in the fields at the beginning of the crop year (by October 15 or as approved by the city) - \$10/ac
- Green or living plant cover or crop residue in the fields in Spring - \$10/ac
- Green or living plant cover in the fields in Summer - \$10/ac
- Total incentive equals \$30/ac for a combination of living cover or crop residue in the fields throughout the crop year. The crop year is defined as October 1 through September 30.

In addition, Cedarburg will provide incentives to farmers for installing “hard” practices such as buffer strips along field edges, filter strips in high erosion areas, grassed water ways, and field borders including harvestable field borders. Cedarburg will assist with renting special equipment such as interseeders and no till drills for up to 1,000 acres per year in support of installing new practices. The cost of seed is by the farmer.

The maximum annual incentive a farmer can received is \$15,000. The maximum incentive Cedarburg can pay is subject to the city’s annual approved budget. The current maximum incentive budget is \$100,000. The incentive money from the city does not restrict any farmer from pursuing other grants or federal cost sharing programs.

What do you have to do?

- A farmer must register with the city by signing a memorandum of understanding before September 1 each year.
- Then each farm will install the managing practice which will be field verified by the city in the fall to qualify for the first \$10 per acre incentive payment
- A second field inspection will occur in the spring to qualify for the second \$10 per acre payment.
- Finally, a final field inspection will occur toward the end of the summer.
- Farmers will need to provide Cedarburg with soil composition and crop rotation data to support Snap Plus modeling of fields to estimate any runoff reductions. Farmers can instead provide Snap Plus modeling results if they so choose in place of field and crop rotation data.



If you have questions, or you would like more information, please contact:

Stephanie Egner, CCA
Washington County
Conservation Specialist
262-335-4804

Ross Bishop, Farmer
President Cedar Creek
Farmer’s Group
414-531-8531

Katie Vogler, CCA
Ozaukee County
Director Land & Water
Management
262-284-8279

Jon Butt, PE
Mead & Hunt’s Project Manager
for Cedarburg’s Adaptive
Management Program
414-755-1149